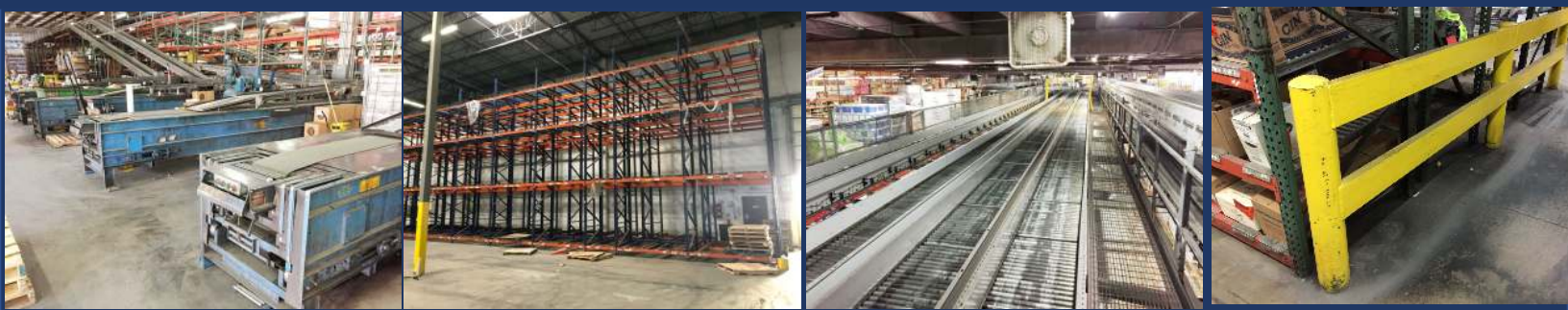


QTY	PRODUCT	SIZE	BRAND
9	Upright	36" x 12'	Republic
54	Upright	42" x 8' x 3" x 1 5/8"	New Style (NS) Tear Drop (TD); 3" x 3" footplate
4	Upright	42" x 14' x 3" x 3"	NS; 3" x 4 1/2" FP
14	Upright	42" x 16' x 3" x 1 5/8"	NS; 3" x 3" FP
6	Upright	42" x 18' x 3" x 3"	NS; 3" x 4 1/2" FP
1	Upright	44" x 14' x 3" x 1 5/8"	NS; 3" x 3" FP
6	Upright	42" x 8' x 3" x 1 5/8"	Tear Drop; 3" x 3" FP
11	Upright	42" x 10' x 3" x 3"	TD' 3" x 4 1/2" FP
4	Upright	42" x 11.5' x 3" x 3"	TD; 3" x 4 1/2" FP
2	Upright	42" x 12' x 3" x 2 1/2"	TD; 3" x 5" FP
2	Upright	42" x 14' x 3" x 3"	TD; 3" x 4 1/2" FP
132	Upright	42" x 15' x 3" x 3"	TD; 3" x 4 1/2" FP
36	Upright	42" x 16' x 3" x 1 5/8"	TD; 3" x 5" FP
1	Upright	42" x 16' x 3" x 2 1/2"	TD; spliced at 12'
59	Upright	42" x 16' x 3" x 3"	TD; 3" x 4 1/2" FP
17	Upright	42" x 17' x 3" x 2 1/2"	Tear Drop
15	Upright	42" x 17' x 3" x 3"	TD; cant leg at 38"
20	Upright	42" x 17' 11" x 3" x 3"	TD; 12" cant leg at 57"; 3" x 8" FP
4	Upright	42" x 18' x 3" x 1 5/8"	Tear Drop
170	Upright	42" x 18' x 3" x 3"	TD; 3" x 4 1/2" FP
157	Upright	42" x 18' x 3" x 3"	TD; 12" cant leg at 62"; 3" x 8" FP
131	Upright	42" x 18' x 3" x 3"	Mecalux TD; 3 1/2" x 5" FP; bolted
37	Upright	42" x 20' x 3" x 3"	TD; 12" cant leg at 38"; 8" x 8" FP
2	Upright	42" x 20' x 3" x 3"	TD; 3" x 5" FP
5	Upright	42" x 24' x 3" x 3"	TD; cant leg at 38"; 8" x 8" FP
48	Upright	42" x 26' x 3" x 3"	Mecalux TD; reinf. F&B to 5'; 8" x 8" FP; bolted
1	Upright	44" x 16' x 3" x 1 5/8"	TD; 3" x 4 1/2" FP
61	Upright	44" x 16' x 3" x 3"	TD; 3" x 4 1/2" FP
4	Upright	54" x 16' x 3" x 3"	TD; 3" x 4 1/2" FP
4	Monopost	3" x 3" x 16'	TD; 3" x 4 1/2" FP
56	Beam	3 1/2" x 96"	Republic
47	Beam	2 1/2" x 48" x 1 5/8"	Universal T Bolt
155	Beam	2 1/2" x 96" x 1 5/8"	Universal T Bolt
84	Beam	3 1/4" x 96" x 1 5/8"	Universal T Bolt
74	Beam	4 1/4" x 96" x 1 5/8"	New Style Tear Drop
36	Beam	5 1/8" x 96" x 1 5/8"	New Style Tear Drop
6	Beam	2 1/2" x 48" x 7/8"	Tear Drop
12	Beam	2 1/2" x 48" x 1 5/8"	Tear Drop
142	Beam	3" x 48" x 1 5/8"	Tear Drop
54	Beam	3 1/2" x 48" x 1 5/8"	Tear Drop
160	Beam	3 1/4" x 92" x 1 5/8"	Tear Drop
192	Beam	4" x 92" x 1 5/8"	Tear Drop
46	Beam	4 3/8" x 92" x 1 5/8"	Tear Drop
128	Beam	4" x 94" x 1 5/8"	Tear Drop
340	Beam	5" x 94" x 1 5/8"	Tear Drop
15	Beam	2 1/2" x 96" x 1 5/8"	Tear Drop
10	Beam	3" x 96" x 1 5/8"	Tear Drop
758	Beam	3 1/4" x 96" x 1 5/8"	TD; #311



QTY	PRODUCT	SIZE	BRAND
444	Beam	4" x 96" x 1 5/8"	TD
1,056	Beam	4 1/4" x 96" x 1 5/8"	TD
74	Beam	4 1/2" x 96" x 1 5/8"	TD
494	Beam	5" x 96" x 1 5/8"	TD
616	Beam	4" x 97" x 1 5/8"	TD
2	Beam	6" x 108" x 1 5/8"	TD
8	Beam	4 1/2" x 108" x 1 5/8"	TD
70	Beam	5" x 120" x 1 5/8"	TD
8	Beam	5" x 144" x 1 5/8"	TD
24	Beam	6" x 144" x 1 5/8"	TD
1,009	Wire Deck	42" x 46"	2-sided waterfall; 3 channel
56	Wire Deck	42" x 58"	2 WF; 3 channel
90	Wire Deck	44" x 44"	2 WF; 3 channel
13	Wire Deck	44" x 46"	2 WF; 3 channel
138	Steel Deck	12" x 1 5/8" x 38 3/8"	Solid deck; orange
38	Row Spacer	6"	
146	Row Spacer	8"	
24	Row Spacer	12"	
12	Row Spacer	45"	
142	Pallet Support	3"W x 40 3/8"L x 1 5/8"H	Box style
1,300	Pallet Support	42"	Flanged
140	Carton Flow Lane	9 1/2" x 38 3/8" x 1 1/2"	Qty in lanes; Span Track; no clips
471	Carton Flow Lane	9 1/2"W x 38 3/8"L x 2 1/4"H	Qty in lanes; SpanTrack; clip on one end
56	Carton Flow Lane	9 1/2" x 39" x 2 1/4"	Qty in lanes; Span Track; clip on one end
32	Carton Flow Lane	9 1/2"W x 39"L x 1 1/4"H	Qty in lanes; SpanTrack; clips both ends
156	Carton Flow Lane	9 3/4" W x 42"L x 2 1/4"H	Qty in lanes; SpanTrack; clips both ends
90	Carton Flow Lane	9 1/2"W x 44"L x 1 1/4"H	Qty in lanes; SpanTrack; clips both ends
360	Carton Flow Lane	9 1/2"W x 59"L x 1 1/4"H	Qty in lanes; SpanTrack; in Kingway shelves
196	Carton Flow Lane	9 1/2" x 84" x 2 1/4"	Qty in lanes; Span Track; clips both ends
560	Carton Flow Lane	9 1/2"W x 85"L x 2 1/4"H	Qty in lanes; SpanTrack; clips both ends
182	Carton Flow Lane	9 1/2"W x 87"L x 2 1/4"H	Qty in lanes; SpanTrack; clips both ends
195	Carton Flow Lane	9 1/2"W x 88"L x 2 1/4"H	Qty in lanes; SpanTrack; no clips
196	Carton Flow Lane	9 1/2" x 146" x 2 1/4"	Qty in lanes; Span Track; clips both ends
195	Carton Flow Lane	9 1/2"W x 153"L x 2 1/4"H	Qty in lanes; SpanTrack;
28	Carton Flow Lane	13"W x 87"L x 2 1/4"H	Qty in lanes; SpanTrack; clips both ends
105	Carton Flow Lane	12 1/2"W x 146 1/2"L x 2 1/4"H	Qty in lanes; SpanTrack; clips both ends
5	Carton Flow Shelf	44"W x 48"L	Qty in shelves; with rollers
10	Carton Flow Shelf	44"W x 96"L	Qty in shelves; with rollers
57	Carton Flow Shelf	60"W x 87"D	Qty in Kingway; 12" impact; 16" tilt
17	Carton Flow Shelf	60"W x 88'D	Qty in Kingway; 12" impact; no tilt
18	Carton Flow Frame	60"W x 113"H x 85"D	Qty in sections; Kingway
8	Bollard	48"	In concrete
16	Guard Rail Post	4" x 4" x 42"	
5	Guard Rail Post	6 1/2" x 6 1/2" x 42"	9" x 9" FP
4	Guard Rail	8" x 45 3/8"	
8	Guard Rail	8" x 98 3/4"	





QTY	PRODUCT	SIZE	BRAND
6	Guard Rail	12" x 68"	
14	Guard Rail	12" x 116"	
71	Guard Rail	48" x 22'	Qty in ft; welded; 12" x 12" FP
144	Safety Netting	14'H	Qty in lin. Ft.
17	Safety Netting	11'H	Qty in lin. Ft.
47	Security Fence	12' High	Qty in ft; chain link; with 9' sliding gate
100	Security Fence	5' x 10'	Qty in panels; Wirecrafter;
22	Pushback	Various	Qty in pallet positions
84	Pushback	3D x 2H	Qty in pallet positions; carton flow below
500	Catwalk	26"W x 248'	Qty in sq. ft; bar grate deck; saddle clip in angle iron frame
49	Bar Grate	26"W x 8'	Qty in panels
1,115	Mezzanine	10.1'W x 110.3'L x 15'H	Qty in sq. ft; bolted; bar grate deck - saddle clip
1,271	Mezzanine	10.25'W x 124'L x 16'H	Qty in sq. ft; bar grate deck; rack supported
5,670	Mezzanine	45'W x 126'L x 16'H	Qty in sq. ft; rack and steel; welded; safety net
300	Mezzanine	30"W x 120'L	Qty in sq. ft; welded bar grate with handrail
158	Conveyor Support	48" x 23' x 3" x 3"	Qty in ft; upright and beam rack support for 2 levels power conveyor
326	Power Conveyor	24"	Qty in ft; decline; BOR
120	Power Conveyor	24"	Qty in ft; slider bed
130	Power Conveyor	18"	Qty in ft; Cosveyor BOR; with stands
120	Power Conveyor	18"	Qty in ft; line shaft
360	Power Conveyor	18"	Qty in ft; photo eye
4	Power Conveyor	18"	Photo eye drive
2,424	Power Conveyor	24"	Qty in ft; live roller
3	Power Conveyor	24"	90 degree curve
300	Power Conveyor	24"	Qty in ft; photo eye
42	Power Conveyor	6:01	Qty in ft; merge table
56	Gravity Pallet Flow	11"W x 101" L x 3 1/2"H	Qty in sticks
56	Gravity Pallet Flow	11"W x 103" L x 3 1/2"H	Qty in sticks
56	Sorter	7 LH Diverts	Qty in ft.
1	Spiral	30" x 16'	Ambaflex Spiralveyor;
4	Truck Loader	23' x 74'	Stewart Glapat Adjustoveyor; mfg. date 2000
1	Truck Loader	21' x 69'	Stewart Glapat Adjustoveyor; mfg. date 2014
520	Guide Rail	3 1/2" x 4" x 3/8" x 20'	Qty in ft; bolt to floor 24" centers
14	Battery Charger		Life Plus TC3-W
4	Bulk Shelving	18'D x 72"W x 72"H	Qty in units; 4 levels; 5/8" particle board
1	Rolling Stair	10'H x 24"W	12 steps



QTY	PRODUCT	SIZE	BRAND
72	Upright	50" x 125" x 4" x 3"	Unarco; 6 1/2" x 8" FP
36	Monopost	4" x 3" x 125"	Unarco; 6 1/2" x 8" FP
18	Monopost	4" x 3" x 110"	Unarco; 6 1/2" x 8" FP
210	Beam	3" x 96" x 1 5/8"	Unarco T Bolt; universal
336	Beam	4" x 96" x 1 5/8"	Unarco T Bolt; universal
42	Beam	C9 x 96"	
168	Beam	6" x 96" x 1 5/8"	Unarco T Bolt; universal
78	Beam Row Spacer	6" x 138"	I-Beam; cross-aisle
612	Carton Flow	12 1/2" x 180" x 2 1/2"	Qty in lanes; Span Track; 20" tilt tray; tek screwed
204	Carton Flow	12 1/2" x 198" x 2 1/2"	Qty in lanes; Span Track; 20" tilt tray; tek screwed
38	Steel Shelving	24"D x 24"W x 84"H	Qty in units
137	Steel Shelving	24"D x 48"W x 84"H	Qty in units
163	Lighting/data line		Qty in ft.
815	Sprinkler pipe		Qty in ft.
205	Plywood Decking	4' x 8' x 3/4"	Qty in sheets; Resin Deck
105	B Deck	3' x 20'	Qty in panels
320	Gravity Conveyor	18" x 10' x 1.9" on 3"	Qty in ft.
10	Gravity conveyor	18" x 5' x 1.9" on 3"	Qty in ft.
35	Gravity Conveyor Stand	18"	
150	Trash Conveyor	18" x 10' x 1.9" on 3"	Qty in ft; Hytrol BOR
2	Trash Conveyor Drive	18"	
1	Trash Conveyor Tail	18" x 90"	
150	Power Conveyor	18"	Qty in ft; Hytrol BOR; photo eye
15	Power Conveyor	18"	Qty in ft; Hytrol BOR incline
2	Power Conveyor	18"	Hytrol curve
2	Stair		With landing

**Pick Module 1**

**Description: Ground + 1 upper level Unarco T Bolt system; 17ea. 96"W bays; Span Track carton flow on ground level; ground level working floor width is 120" with gravity on both sides and trash conveyor above; power take-away conveyor at end of module; 2 stairs with landings; overall dimensions approximately 42.5'W x 163'L; second level is full dance floor with steel shelving only**



<u>QTY</u>	<u>PRODUCT</u>	<u>SIZE</u>	<u>BRAND</u>
30	Upright	48" x 114" x 3" x 3"	Speedrack Tear Drop; 3" x 4 1/2" FP
30	Upright	54" x 114" x 3" x 3"	Speedrack TD; 3" x 4 1/2" FP
30	Monopost	3" x 3" x 114"	Speedrack Clip-type; 3" x 4 1/2"FP
224	Beam	4 3/8" x 120" x 1 5/8"	Speedrack TD
112	Beam	4 3/8" x 120" x 1 5/8"	Speedrack universal
42	Beam	4 1/2" x 90"	Speedrack bolt-on
56	Beam	6" x 120"	Speedrack TD
28	Beam	6" x 120"	Speedrack bolt-on
56	Beam	C7 x 120"	Speedrack TD
30	Row Spacer	49"	
1,008	Carton Flow	13"X x 189 1/2"W x 3"H	Span Track; clips both ends
115	Pallet Flow	12"W x 201"L x 3 1/2"H	Qty in sticks; gravity roller 1.9" on 3" center; spliced at 120"
280	Lighting/data line		Qty in ft.
600	Sprinkler pipe		Qty in ft.
180	Plywood Decking	4' x 8' x 3/4"	Qty in sheets; Resindeck
95	B Deck	3' x 20'	Qty in panels
70	Power Conveyor	24"	Qty in ft. Incline; BOR
280	Power Conveyor	18"	Qty in ft. Conveyor
2	Stair		With landing

**Pick Module 2**

**Description: Ground + 1 upper level Speedrack system; 14ea. 120"W bays; Span Track carton flow on ground level; ground level working floor width is 90" with Cosveyor BOR down the center; power take-away conveyor at end of module; 2 stairs with landings; overall dimensions approximately 41.5'W x 158'L; second level is full dance floor with pallet flow and Cosveyor BOR down the center**





QTY	PRODUCT	SIZE	BRAND
28	Upright	50" x 114" x 4" x 3"	Unarco closed col; 6 1/2" x 8" FP
28	Upright	50" x 114" x 4" x 3"	Unarco closed col; 6 1/2" x 8" FP; reinforced to 10'
28	Monopost	3" x 3" x 114"	
156	Beam	6" x 120"	T Bolt - roll formed
28	Beam	C6 x 95"	
13	Beam	C6 x 114"	
78	Beam	C6 x 120"	
52	Beam	C7 x 120"	
28	Row Spacer	50"	
200	Pallet Flow	12"W x 17"L x 3 1/2"H	Qty in sticks; gravity roller 1.9" on 3" center
338	Lighting/data line		Qty in ft.
800	Sprinkler Pipe		Qty in ft.
170	Plywood Decking	4' x 8' x 3/4"	Qty in sheets; Resin Deck
90	B Deck	3' x 20'	Qty in panels
260	Power Conveyor	24"	Qty in ft; Conveyor BOR
2	Stair		With landing

**Pick Module 3**

**Description: Ground + 1 upper level Unarco system; 13ea. 120"W bays; gravity pallet flow on both levels; ground level working floor width is 95" with Cosveyor BOR down the center; power take-away conveyor at end of module; 2 stairs with landings; overall dimensions approximately 41' 9"W x 143'L; second level is full dance floor with pallet flow and Cosveyor BOR down the center**