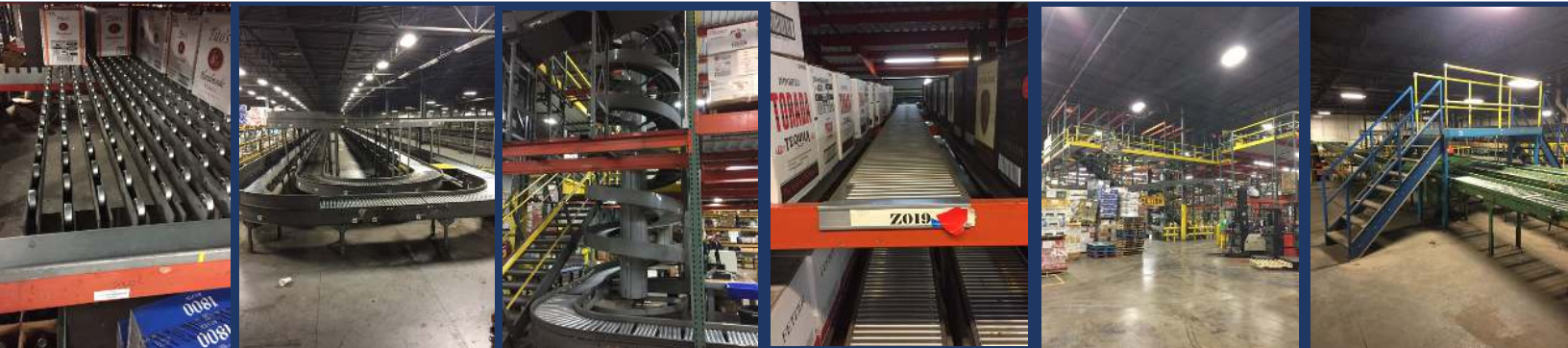


Michigan Liquidation II: New Style, T Bolt, Power Conveyor, Pallet Flow, Span Tack



QTY	PRODUCT	SIZE	BRAND
91	Upright	24" x 8' x 3" x 1 5/8"	New style
156	Upright	36" x 20' x 4" x 3"	New style
240	Upright	48" x 20' x 3" x 3"	New style; double reinforced; 5" x 7" FP
257	Upright	48" x 20' x 4" x 3"	New style; double reinforced; 5" x 7" FP
6	Upright	48" x 16' x 3" x 3"	New Style; welded decline support
44	Beam	5" x 98"	C channel
62	Beam	5" x 102"	C channel
60	Beam	5" x 192"	C channel
2	Beam	6" x 150"	C channel
36	Beam	8" x 96"	C channel
2	Beam	8" x 116"	C channel
64	Beam	8" x 126"	C Channel
24	Beam	2 1/2" x 105" x 1 5/8"	New style
492	Beam	3" x 96" x 1 5/8"	T Bolt adjustable
312	Beam	3 3/4" x 112" x 1 5/8"	New style
48	Beam	4" x 127" x 1 5/8"	Adjustable
504	Beam	2 1/2" x 105" x 1 5/8"	New Style
360	Beam	3" x 96" 1 5/8"	New style
108	Beam	4" x 112" x 1 5/8"	New style
72	Beam	4 1/2 x 98" 1 5/8"	New style
66	Beam	4 1/2" x 102" x 1 5/8"	New style
96	Beam	4 1/2" x 112" x 1 5/8"	New style
864	Beam	4 1/2" x 127" x 1 5/8"	New style
528	Beam	6" x 112" x 1 5/8"	New style
1,200	Beam	6" x 127" x 1 5/8"	New style
422	Beam	8" x 96" x 1 5/8"	New style
22	Beam	8" x 116" x 1 5/8"	New style
704	Beam	8" x 126" x 1 5/8"	New style
16	Beam	8" x 144" x 1 5/8"	New style
19	Beam	8" x 150" x 1 5/8"	New style
23	Beam	8" x 151 1/2" x 1 5/8"	New style
108	Beam	6 1/2" x 102"	Cross aisle



QTY	PRODUCT	SIZE	BRAND
516	Wire Deck	24" x 51"	Lay-in; 3 channel
8	Truck Loader	56"W x 19.5'L; 18" belt	Stewart Glapat; mod 1961; mfg 10/86
1,080	Power Conveyor	20" Live Roller	Qty in ft; Buschmann; slider and decline
8,300	Power Conveyor	24" Live Roller	Qty in ft; Buschmann
20	Power Conveyor	30" Merge	Qty in ft; Buschmann
1	Power Conveyor	36" x 100'	100' long; Buschmann LH shoe sorter; 9 diverts
7	Power Conveyor	Feeder beds	Buschmann
6,250	Power Conveyor	24" x 12' x 1.9" x 2"	Qty in ft; Accuglide Photo Eye; with curves/declines
8,400	Power Conveyor	24" BOR	Qty in ft; Hytrol - photo eye accumulation with 28 drives
550	Power Conveyor	18" BOR	Cos Veyor
2	Power Conveyor	21" Belt	Ryson spiral conveyor
240	Gravity Conveyor	18" x 10' x 1.9" x 3"	Qty in ft.
2,354	Pallet Flow	11 1/2" x 199"; 1.9" on 3"	Qty in ft; Roller lanes - floor mount
312	Pallet flow	144"L x 3 1/4"W x 5"H	Qty in sticks; staggered skate wheel
320	Pallet flow	210"L x 3 1/4"W x 5"H	Qty in sticks; staggered skate wheel
4,906	Carton Flow	171"L x 1"W x 3"T	Qty in sticks; HD single skate wheel
128	SpanTrak	12 1/2" x 147" x 2 1/4"	Qty in lanes; 3/4" on 2"
554	SpanTrak	12 1/2" x 101" x 2 1/4"	Qty in lanes; 123" with 19" tilt tray; 3/4" on 2"
160	SpanTrak	12 1/2" x 118" x 2 1/4"	Qty in lanes; 123" with 5" tilt tray; 3/4" on 2"
356	Span Trak	11 1/2" x 185" x 2 1/4"	Qty in lanes; 189" with clips; 3/4" on 2"
2,068	B Deck	3' x 20'	Qty in sheets
3,878	Resin Floor Deck	4' x 8' x 3/4"	Qty in sheets; T & G
156	Plywood Shelf	48" x 112" x 3/4"	Qty in wood shelves; Tek screwed
7,925	Sprinkler Pipe		Qty in ft.
4,000	Air lines		Qty in ft.
9	Stair tower	20'T	
80	Crossover Stair	30"W x 27"L	3 step conveyor crossovers
1	Crossover Stair	32"W x 9'L	7 step conveyor crossover
1	Crossover Stair	32"W x 18'L	7 step conveyor crossover
500	Fencing	8' to 9' H	Qty in lin. Ft; Security cage